



TAG 150

7 YEAR NON-RECHARGEABLE BATTERY OPERATED TRAILER TRACKING UNIT

The TAG 150 is a battery operated non-rechargeable tracking product designed for reliable, multi-year deployments. The TAG 150 is an ideal solution for managing assets that will be deployed for long periods without maintenance needs.

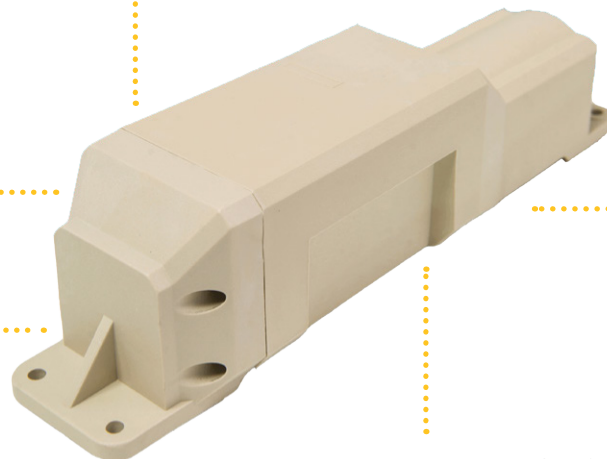
The TAG 150 is exceptionally easy to use and install, with a replaceable battery and magnetic mount available on request.

SOLUTIONS THAT USE THIS DEVICE:

- ▶ Trimble Asset Tracking
- ▶ Trimble PULSE™

Key Features

- ▶ GSM/GPRS, CDMA/1xRTT or HSPA configurations
- ▶ 7 year battery life with a single message per day
- ▶ Superior cellular and GPS performance
- ▶ IP-67 sealed and rugged enclosure
- ▶ Built-in motion sensor
- ▶ Built-in cellular and GPS antenna for easy installation
- ▶ Built-in 3-axis accelerometer for motion sense
- ▶ 10 built-in geo-fences
- ▶ 2,000 buffered messages
- ▶ Mobile configuration
- ▶ Customizable profile



- ▶ AUTOMATIC, OVER-THE-AIR UNIT CONFIGURATION ON POWER-UP
- ▶ ULTRA LOW POWER SLEEP MODE
- ▶ OVER-THE-AIR FIRMWARE DOWNLOAD
- ▶ VOLTAGE MONITORING AND LOW BATTERY NOTIFICATION
- ▶ WEB-BASED OR MOBILE DEVICE MANAGEMENT



GENERAL

Communication Modes GPRS/EDGE/HSPA,CDMA/1xRTT
 Location Technology 50 channel GPS
 Operating Voltage 3.6 volt internal battery pack

ELECTRICAL

Operating Voltage 3.6 internal battery
 Power Consumption <100µA @ 12V (deep sleep)
 70mA @ 12V (active standby)
 Battery 57 Ah lithium

ENVIRONMENTAL

Temperature -30° to + 75° C (operating) tethered
 -40° to + 85° C (storage)
 Humidity 95% R.H. @ 50° C non-condensing
 Shock and Vibration U.S. Military Standards 202G and 810G,
 SAE J1455
 EMC/EMI SAE J1113
 RoHS Compliant
 IP-67 Enclosure

GPS

Location Technology GPS
 Enhancement Technology SBAS: WASS, EGNOS, MSAS, GAGAN
 Tracking Sensitivity -162 dBm
 Acquisition Sensitivity -147 dBm
 Location Accuracy 2.0m CEP
 AGPS / Location assistance capable

CELLULAR/BANDS

Operating Bands (MHz) SMS, GPRS, or HSPA packet data
 GSM/GPRS 850/900/1800/1900
 HSPA/UMTS 800(VI)/850(V)/900(VIII)/1700(IV)/1900(II)/2100(I)
 CDMA/1xRTT 850/1900
 HSPA Data Rates 5.6 Mbps upload/ 7.2 Mbps download
 HSPA Fallback EDGE/GPRS/GSM quad band
 EDGE MCS1 -MCS9
 3GPP Release 6
 Data Support SMS, UDP Packet Data

PHYSICAL

Dimensions 2.25" x 2.25" x 10.5" (55 x 55 x 260mm)
 Weight 32oz (907g)

CONNECTORS, SIM ACCESS

SIM Access Internal
 Cellular Antenna Internal
 GPS Antenna Internal

CERTIFICATIONS: FCC, CE, IC, PTCRB, Applicable Carriers

PRODUCT OPTIONS: Screw mounting bracket, or magnet mount

About us

Trimble Field Service Management provides visibility into field and fleet operations so businesses can streamline efficiency and increase productivity. The field service management suite includes service solutions, fleet solutions and asset solutions that transform the effectiveness of work, workers and assets in the field. The cloud-based portfolio allows Trimble to offer customers industry-specific, enterprise-level solutions for exceptional performance and ease of use.

Learn more

For more information on Trimble Asset Tracking visit:
resources.trimble-fsm.com/asset_tracking

For more information on improving field and fleet productivity, visit:
www.trimble.com/fsm

Specifications subject to change without notice.



www.trimble.com/fsm

© 2018, Trimble Navigation Limited. All rights reserved. Trimble, the Globe & Triangle logo and Trimble PULSE™ are trademarks of Trimble Inc. registered in the United States Patent and Trademark Office and in other countries. All other trademarks are the property of their respective owners.

TRIMBLE (Americas)
 935 Stewart Drive /
 Sunnyvale / CA 94085 / USA
 Tel: +1 877 728 7623

TRIMBLE (EMEA)
 1 Bath Street / Ipswich / Suffolk
 IP2 8SD / United Kingdom
 Tel: +44 (0) 1473 696300